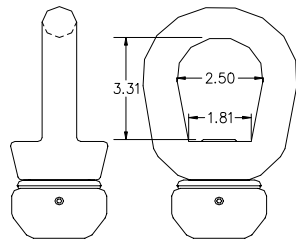
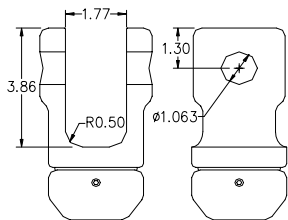


Clevis Options

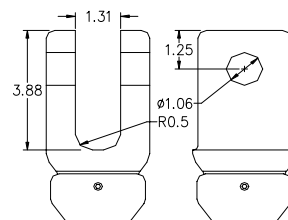
Five clevis swivel assembly options for suspending/anchoring the sheave are available: These options are shown in figures 5 – 9 below. The Clevis-Eye has an opening about 2.5" X 3.3" for a chain or sling. The opening width of the Clevis -AWS is 1 3/4" with a hole for a 1" pin. The opening width of the Clevis -HLS is 1 1/4" with a hole for a 1" pin. The opening width of the Clevis-SJ is 7/8" with a hole for a 1 1/2" pin. The shackle clevis has about the same opening as the Clevis-Eye.



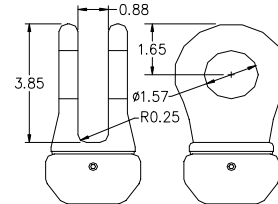
Clevis-Eye
Part # RS-1075A
Figure 5



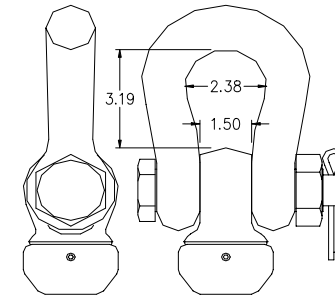
Clevis-AWS
Part # RS-1252A
Figure 6



Clevis-HLS
Part # RS-1552A
Figure 7



Clevis-SJ
Part # RS-1052A
Figure 8



Clevis-Shackle
Part # RS-1152A
Figure 9